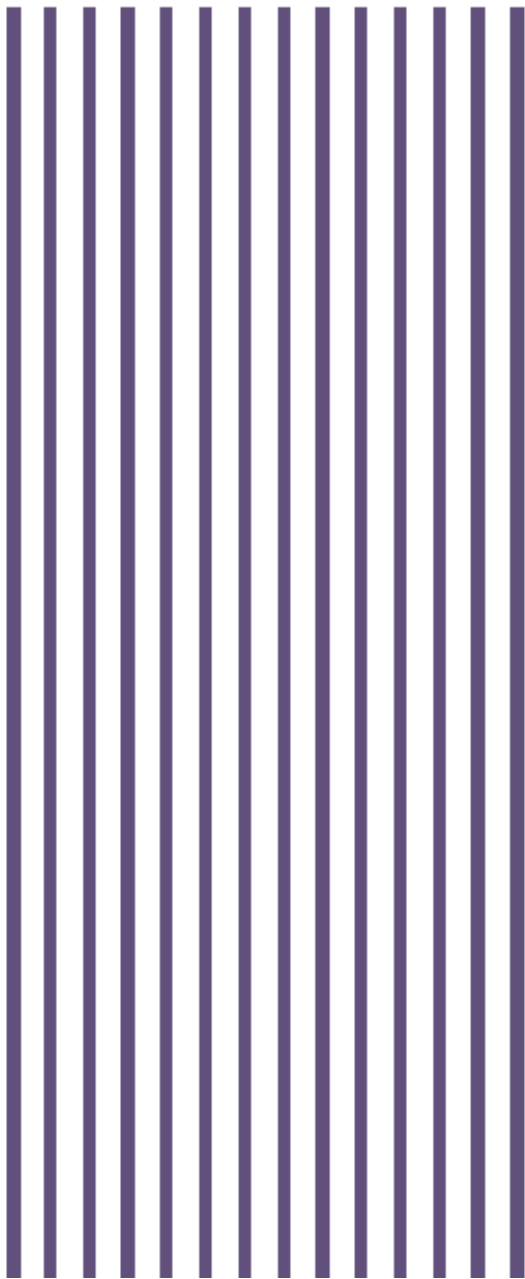




PowerAct Pro Slave Agent

Installation Manual





Introduction & Installation Manual Power Act Pro Slave Agent

Rev 1.00

Rev.	Date	Author	Description
1.00	20161212	—	First Release English ver.

Precautions for Correct Use

Intended uses

This software is designed and produced for computers used in offices and server rooms. Never use this software for the following purposes, which require extremely high reliability and safety.

1. Use directly related to human life such as medical equipment
2. Use that could cause injuries
Example: Use directly related to the service, operation, or control of aircraft, ships, trains, or elevators.
3. Use for mission-critical computer systems, trunk line communication systems, or public transportation systems.
4. Use for any devices applicable to any of the above.

Software License Agreement

Installing the software to your computer constitutes your full acceptance of the following software license agreement ("the agreement"). If you do not agree, do not install the software in your computer.

Software License Agreement

The agreement is what OMRON Corporation ("OMRON") determines as the terms and conditions under which the software products ("the software") are licensed to our customers. Before using the software, be sure to read the following precautions carefully.

1. "The software" referred to in the agreement includes all the computer programs and related technical documentation which are included in this package. Copyrights and other intellectual property rights related to the software belong to OMRON or the third parties that have a license to OMRON, and are never transferred to you by the agreement. If the customer violates those rights, the customer shall bear the responsibility to OMRON and the third parties that have a license to OMRON described above.
2. OMRON accepts the non-exclusive right granted to the customer for using the software only for the purpose of managing the UPS.
3. The customer cannot lend or transfer the license to any third party without OMRON's prior consent.
4. The customer can copy the software only for the purpose of backing up the software. The customer is not allowed to modify, decompile, disassemble, reverse engineer, or make any similar attempt for the software.
5. The customer shall keep the content of the software confidential and shall not disclose it to third parties during the agreement period and after its termination.
6. If the customer discovers that the software is defective and returns it within 90 days after purchasing the product, OMRON will replace it free of charge.

7. The above software replacement defines all of the software assurance responsibility of OMRON, and OMRON is not responsible for any damages due to the defect of the software resulting from the direct or indirect use of the software by the customer, or repercussive damages.

If the customer receives a claim from a third party or a party other than the said third party that has a license to OMRON for the infringement of the patent rights (which include rights under the utility model rights, and the same applies below) or copyrights resulting from modification, decompilation, disassembly, and reverse engineering of the software or other similar acts, OMRON does not bear responsibility.

8. In any of the cases in which OMRON assumes responsibility for damages caused to the customer, OMRON is responsible for the damages not exceeding the amount paid by the customer for purchasing the product.
9. If the customer breaches the agreement, OMRON can terminate the license of the software by notifying the customer. In that case the customer must return the software and all of its copies to OMRON.
10. The agreement is interpreted and governed by the laws of Japan.

Requests regarding operation

1. Any diversion of all or part of the contents of the software and this manual without permission is strictly prohibited.
2. The contents of this software and the document may change in the future, without notice.
3. We have made every effort to make the contents of this software and the document complete, however, if you notice an error or other points by any chance, please let us know.
4. Some screens and other graphic items in this document may differ from the actual ones.
 - Google Chrome is a trademark of Google.
 - Linux is a registered trademark of Linus Torvalds in the United States and other countries.
 - Microsoft, Internet Explorer, and Windows are registered trademarks of United States Microsoft Corporation in the United States and other countries.
 - Mozilla and Firefox are registered trademarks of Mozilla Foundation.
 - Other company names and product names mentioned in this manual are the trademarks or registered trademarks belong to their respective owners.

© OMRON Corporation. 2016 All Rights Reserved.

How to Use this Manual



What's in this Manual

This manual consists of the following.

Introduction	Describes the features of the software and the entire system configuration.
Installation	Describes the required conditions for installing the software and the installation method.

Notes on signs, terminology, and use of quotation marks

The signs, terminology, and quotation marks below are used in the manual.

	Indicates a point the user is requested to observe or an item requiring attention during operation is described. Carefully read the description and be sure to do as instructed.
	Indicates that useful information or information giving some hint is described. Also indicates that pages where related information is described or other manuals are described.
The software	Refers to OMRON PowerAct Pro Slave Agent.
[]	Among the items displayed on screen, the items to be operated (buttons to be clicked, etc.) are written with square brackets ("[]").
" "	Quotation marks (" ") are used to indicate items displayed on screen other than the above and link destinations.

Contents

Precautions for Correct Use	1
How to Use this Manual	5
Contents	6
1 Introduction.....	7
1-1 Functions and features	7
1-2 Connecting equipment and operation	8
1-2-1 Connecting more than one computer and using Slave Agent.....	8
1-2-2 Example of a system configuration on virtual OS	9
1-3 Installation procedure and operation check	9
2 Installation Preparations	10
2-1 Notes on installation	10
2-2 Operation environment.....	11
3 Installing the software.....	12
4 Changing firewall configuration	24

1 Introduction

1-1 Functions and features

An Uninterruptible Power Supply (hereafter called as "UPS") is a device for protecting equipment connected to it from power supply abnormalities such as a power failure. However, due to its internal battery capacity, UPS can supply power to the system only for a limited period of time.

For that reason, automatic shutdown software is used to make the system end normally within a certain period of time so as to prevent trouble such as a hard disk drive failure and damage on the system file.

PowerAct Pro is a power management solution with functions also supporting redundant power supply and outlet control built-in.

PowerAct Pro has the following features.

Schedule Action	Lets you specify the condition such as time and date, weekly, and monthly to stop or start the UPS, or conduct a self test on the UPS.
Linked shutdown	Lets you shut down multiple servers or clients on the network by linking them together.
Outlet control	Lets you delay the start of output from an outlet when the UPS starts up or the stop of output from an outlet when the UPS shuts down, by combining the UPS having outlet control functionality with the software.
Application file auto saving	When an input power supply abnormality (power failure, etc.) occurs, automatically saves the files currently created and edited, and ends the application software or the OS.
Multi-OS support	Supports four operating systems, Windows, Linux, Macintosh, and Unix.
GUI	Lets you configure settings on graphical screens.
Virtual server support	Supports Hyper-V/VMware and can control multiple Guest Operation Systems. Not required to be installed to Guest OS.
Script Shutdown	Lets you shut down the OS of such equipment as an appliance server, to which software cannot be installed, using a script.
Ping monitoring and mobile terminal monitoring	Lets you perform the monitoring of the operating states of terminals on the network or outlet control (reboot) from a mobile terminal, without using SNMP.
SNMPv3 support	Supports SNMPv3, and lets you manage power supplies on the network in a secure environment.
CO2 monitoring function	Lets you measure the amount of CO2 easily based on the power consumption of connected terminals. When this function is used together with the Schedule Action function, CO2 emissions or electricity charges can be reduced by stopping the equipment operation during the night and on holidays.

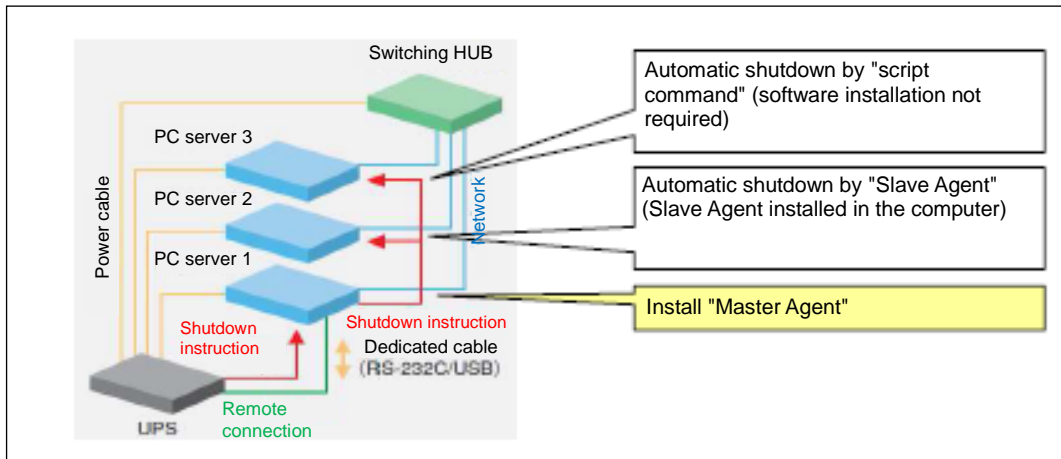
1-2 Connecting equipment and operation

PowerAct Pro consists of "Master Agent", used for the computer directly connected to the UPS via exclusive cable (RS232C or USB), and "Slave Agent" (this software), used for a computer connected via network.

Linked with Master Agent, this software shuts down these computers.

1-2-1 Connecting more than one computer and using Slave Agent

- Install "PowerAct Pro Master Agent" to the computer directly connected to the UPS with an exclusive cable (RS232C or USB).
- Install "PowerAct Pro Slave Agent" to the other computers.



Hint

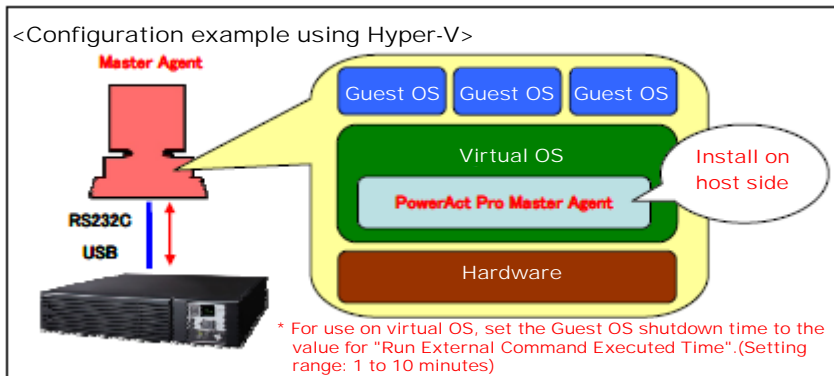
Even if Slave Agent is not installed in a computer, the computer can be also automatically shut down by issuing a script command from Master Agent. Please refer to the instruction manual of Master Agent for setting a script.

1-2-2 Example of a system configuration on virtual OS

For use in a virtual environment using Hyper-V, install PowerAct Pro on the host side.

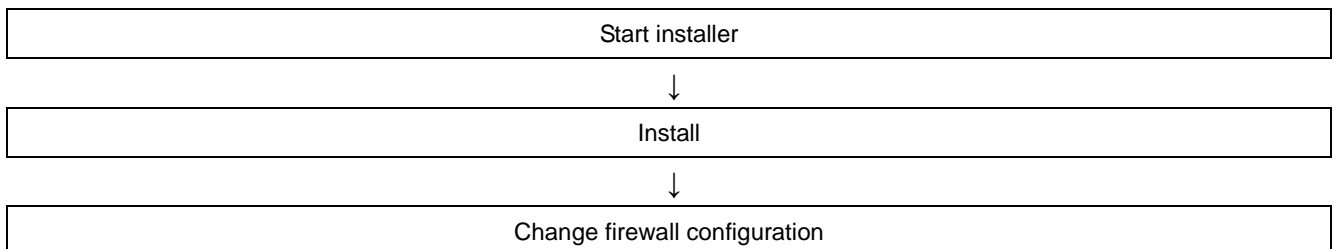
PowerAct Pro is not required to be installed on the Guest OS side. Each Guest Operation System is automatically shut down. When the system reboots, each Guest Operation System starts up in the state before shutdown.

- Both Master Agent and Slave Agent can be installed.
- To install Master Agent, connect via RS232C or USB.
- To install Slave Agent, Master Agent is required separately.



1-3 Installation procedure and operation check

Install the software using the following procedure and check the operation.



2 Installation Preparations

2-1 Notes on installation

Before installing the software, check the following.

<Product>

- This software can be used only on Omron's UPS and OEM-supplied Omron UPS.

<Environment>

- Log in to the OS with a user name with administrator authority.
- Check that the OS can end normally in your usage environment.
- When using other automatic shutdown software, make sure to uninstall that software first, and restart the OS.
For details on how to uninstall each software application, see its instruction manual.

2-2 Operation environment

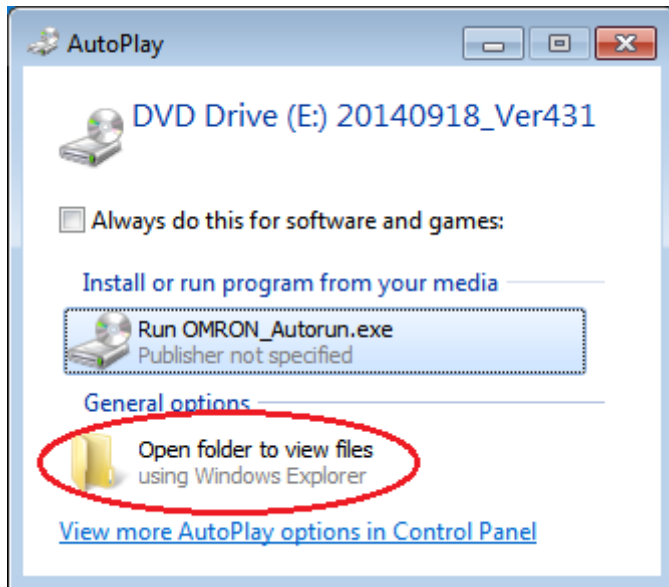
Compatible Computers	The software cannot be used on DOS/V, Apple Macintosh, or their compatible machines.	
Supported operating systems and supported platforms	Microsoft Windows 10 Microsoft Windows 8.1 Microsoft Windows 8 Microsoft Windows 7 Microsoft Windows Vista Microsoft Windows XP Microsoft Windows Server 2012R2*1 Microsoft Windows Storage Server 2012R2 Microsoft Windows Server 2012*1 Microsoft Windows Storage Server 2012 Microsoft Windows Server 2008R2*1 Microsoft Windows Storage Server 2008R2 Microsoft Windows Server 2008*1 Microsoft Windows Storage Server 2008 Microsoft Windows Server 2003R2 Microsoft Windows Server 2003	x86, AMD64, EM64T
Web browser	Microsoft Internet Explorer 11.0/10.0/9.0/8.0/7.0*2/6.0	
HTTP server	Apache HTTP Server 2.2.8 Internet Information Services (Windows OS standard)	
RAM	128MB or more (256MB or more recommended)	
Hard disk capacity	100MB or more	
Interface	RS232C, USB	
Network card	10Mbps or over	
Protocol	TCP/IP	

*1 Also usable in a virtual OS environment using Hyper-V. Install the software in the host operating on the virtual OS (no need to install the software in Guest OS).

*2 For Internet Explorer 7.0, when the Monitor window of the software is opened, an icon warning the user about phishing may appear, which is not a problem.

3 Installing the software

- 1 Insert the CD-ROM that comes with the UPS into the server's drive.
- 2 Click [Open folder to view files].



Hint

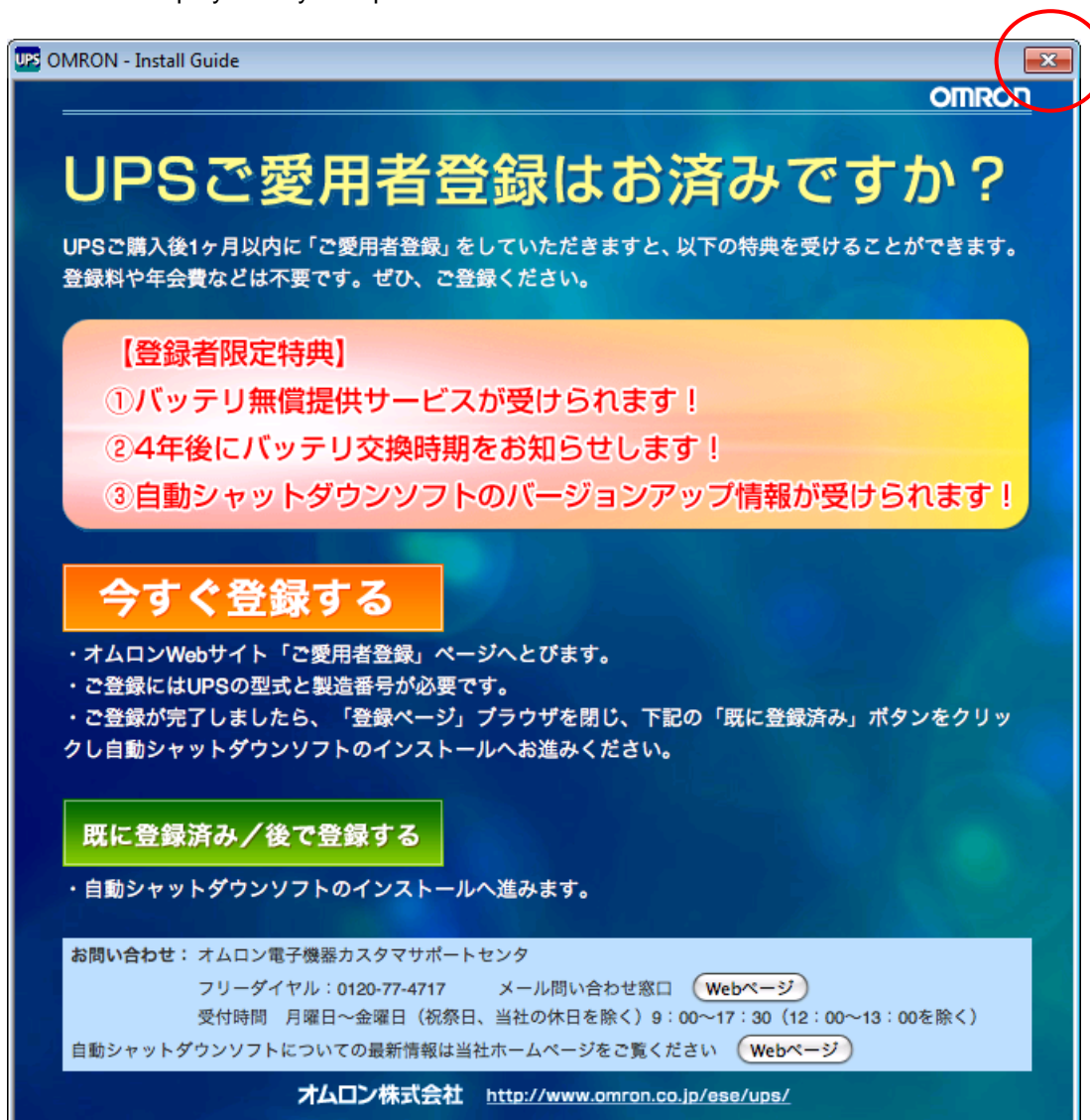
If the above message does not appear, run Setup.exe directly.

Setup.exe is stored in the software folder in the CD-ROM.

Example: When the D drive is a CD-ROM drive.

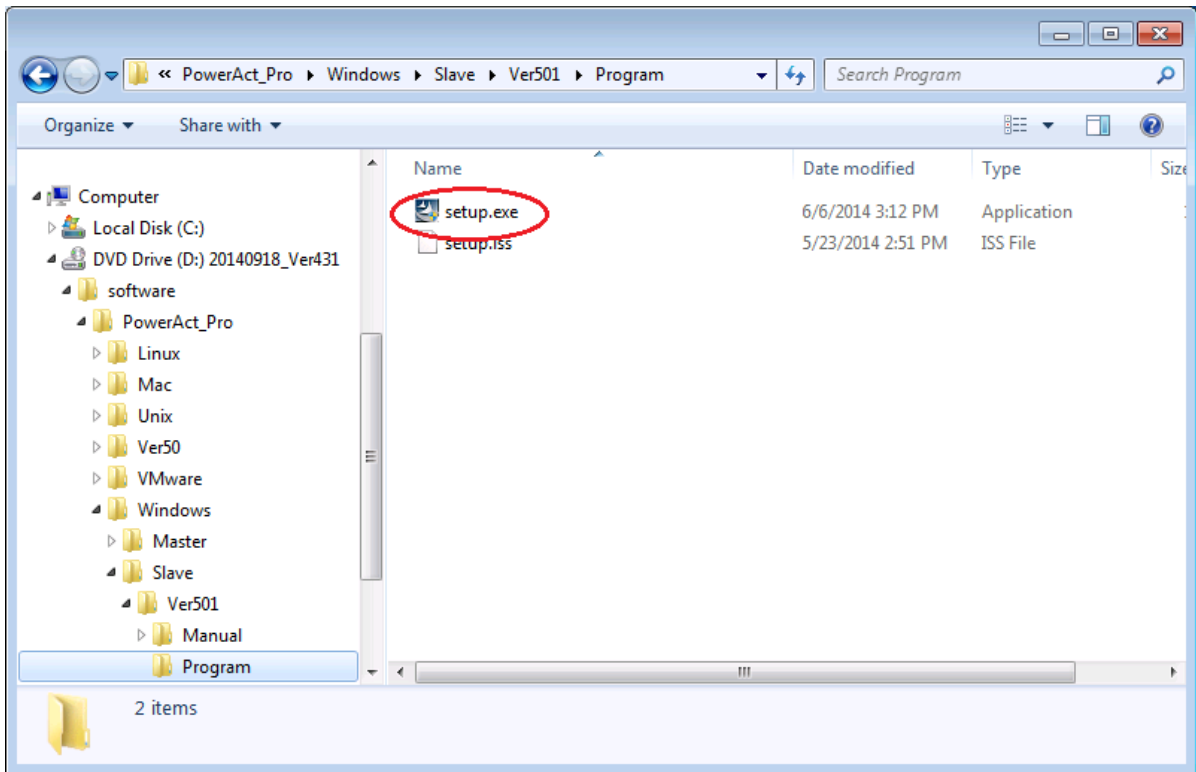
D:¥software¥PowerAct_Pro¥Windows¥Slave¥VerXX¥Program¥Setup.exe

- 3 If the screen, such as the following appears, please exit by pressing the x at the top right of the screen. This screen was displayed only in Japanese.

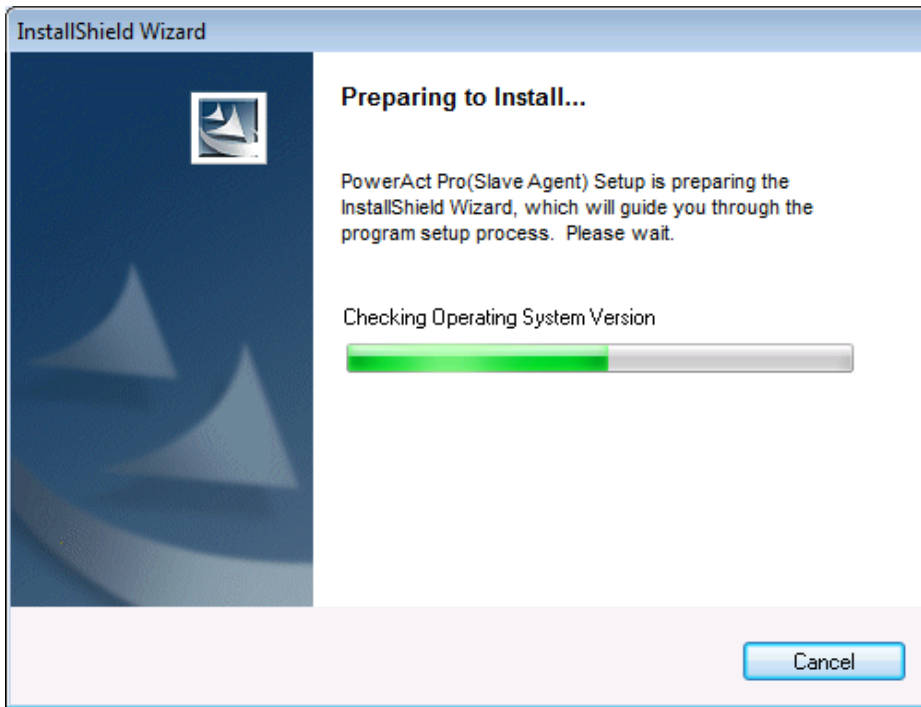


- 4 Run Setup.exe located at the following level in the CD-ROM to directly start the installer.

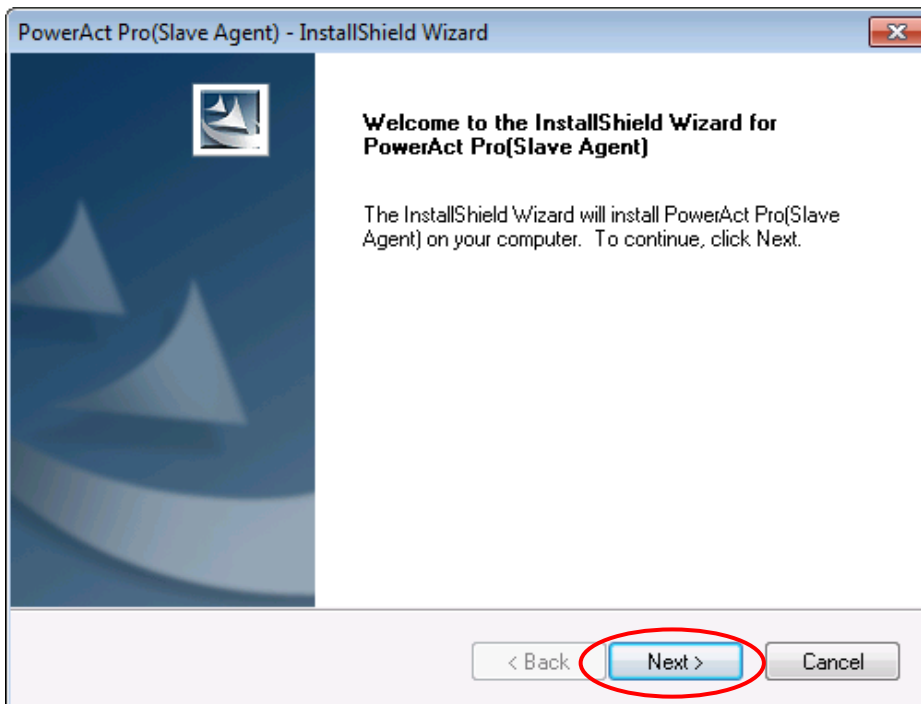
D:\software\PowerAct_Pro\Windows\Slave\VerXX\Program\Setup.exe



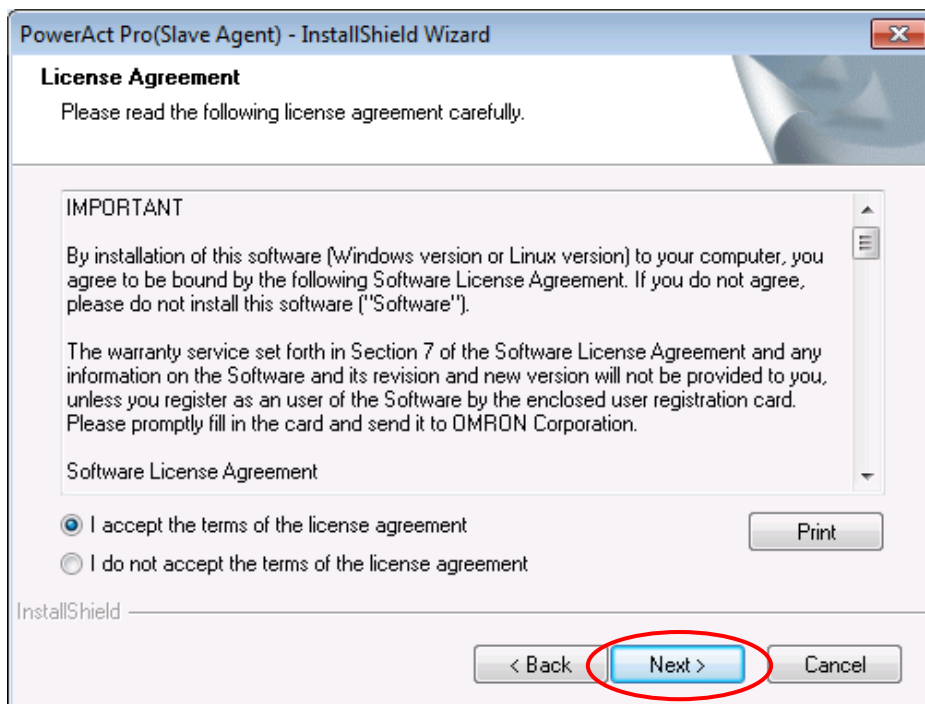
- 5 A window showing the progress appears.



- 6 Click the [Next >] button.



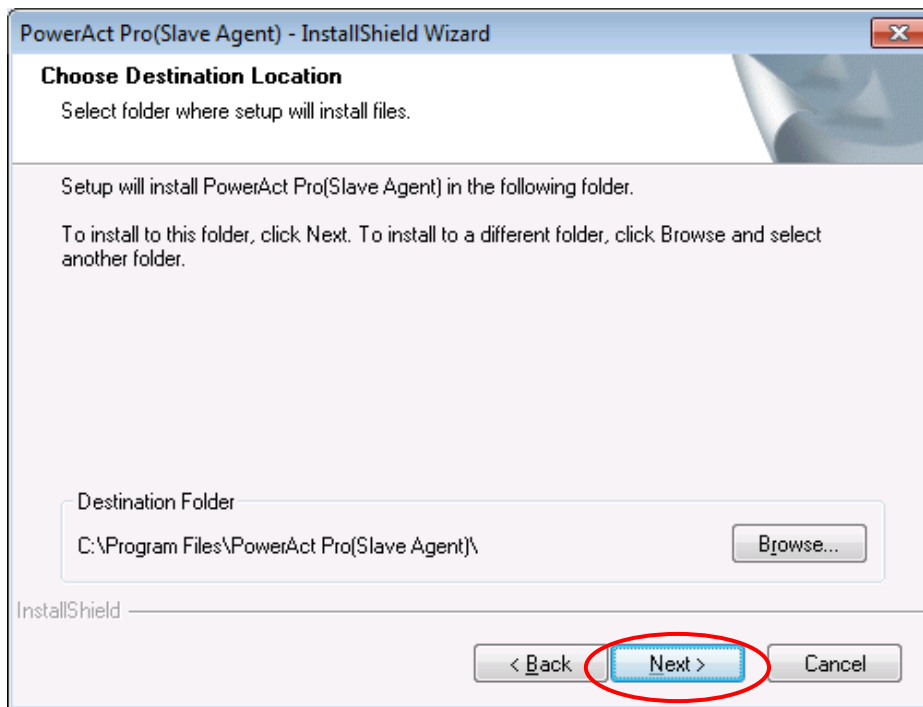
- 7 Read the contents of "License Agreement" carefully, select the radio button for "I accept the terms of the license agreement", and click the [Next >] button.



参考

If you do not accept the terms of the license agreement, you can not use the software.
In that case, click the [Cancel] button to stop the installation process.

- 8 Click the [Next >] button.

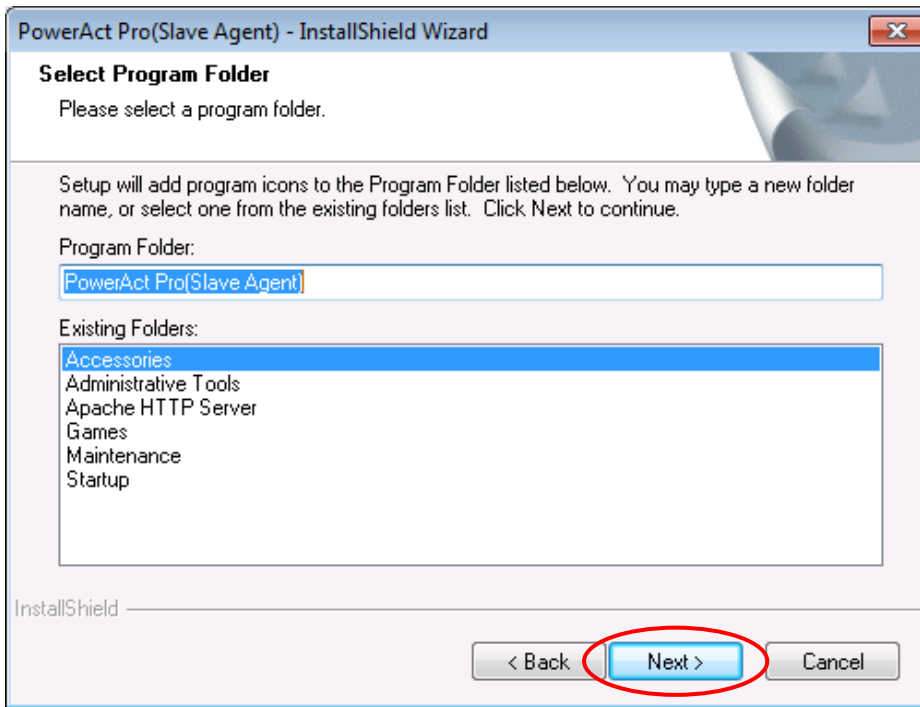
**CAUTION**

Do not install the software in a write-protected folder or network drive.
Be sure to install it in the read and write permitted hard disk drive in the local computer.

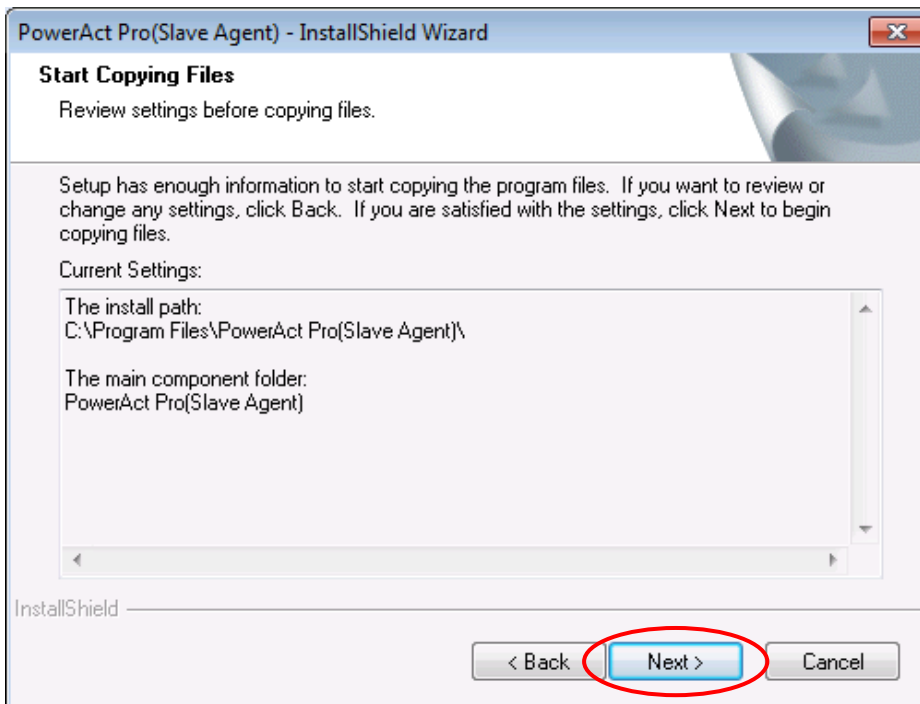
Hint

In this window, you can change the installation destination location for the software. To change the installation destination location for the software, click the [Browse...] button, specify the installation destination location, and click the [Next >] button.

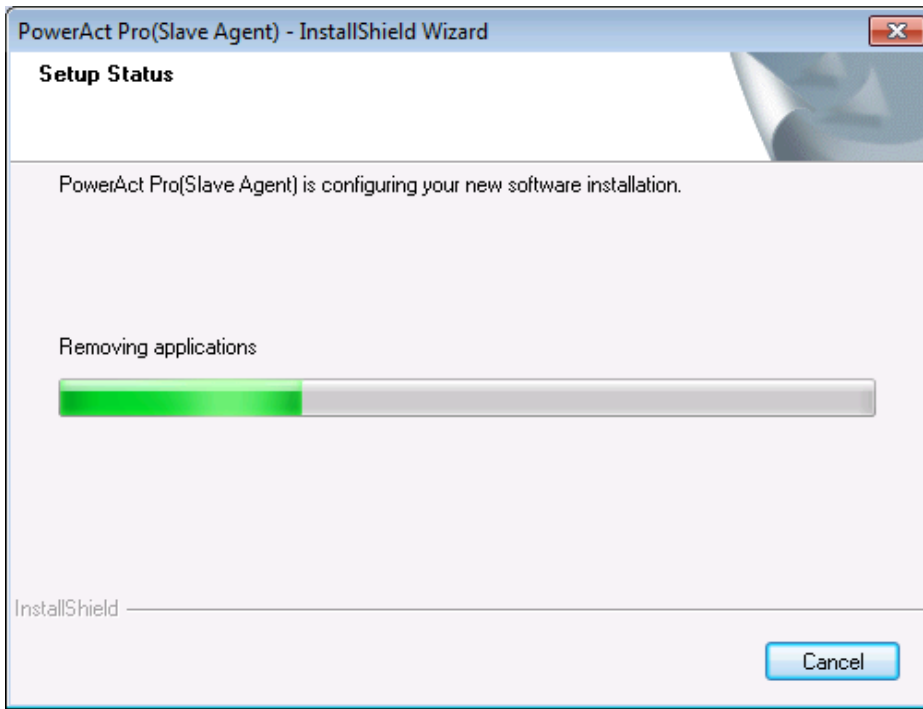
- 9 Click the [Next >] button.



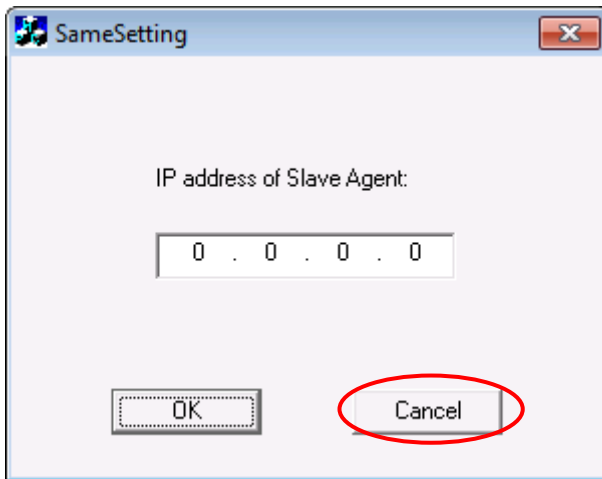
- 10 Click the [Next >] button.



11 A window showing the progress appears.



12 If you use the same configuration as the existing Slave Agent, specify the IP address of the computer in which the Slave Agent is installed and click the [OK] button.
If you use a new configuration, click the [Cancel] button.



13 Select a Master Agent and set shutdown parameters.

To use PowerAct Pro as the Master Agent:

Select Master Agent

- 1) Select PowerAct Pro as the Master Agent.
- 2) Search the IP address of the Master Agent.
- 3) Select the IP address of an appropriate Master Agent.
- 4) Click the [Submit] button.

Set shutdown parameters

- 5) Select the time necessary for shutting down.
- 6) Select [Shutdown] or [Hibernate] as desired.
- 7) Click the [Submit] button.

Finish the setup

- 8) Click the [Close] button.

Other settings can be set as needed.

PowerAct Pro (Slave Agent) Configuration Setting

Select Master Agent

Master Agent: ① PowerAct Pro

Redundant Power Supply Setting: Disable

Redundant Power Supply Mode: 1 + 1

The Total of Power Supply Units in the Computer:

The Total of Power Supply Units in necessary:

IP addresses of Master Agent:

No.	IP Address
1 ③	192.168.2.131

② Search

④ Submit

Popup Message: Disable

Shutdown Parameter Setting

Select UPS Outlet:

No.	Outlet
1	Outlet A (No Control)

⑦ Submit

Shutdown Start Delay Time (Sec): 0

Shutdown Need Time (Sec): ⑤ 60

Run External Command Time (Sec): 0

Run External Command: Browse

Select Shutdown Mode: ⑥ Shutdown

Select Virtual Server Shutdown Mode: Shutdown by System

Select Guest OS Shutdown Mode: Shutdown

Back Event Log ⑧ Close

To use SC20G/SC20G2 as the Master Agent:

Select Master Agent

- 1) Select C20G/SC20G2 as the Master Agent.
- 2) Search the IP address of the Master Agent.
- 3) Select the IP address of an appropriate Master Agent.
- 4) Click the [Submit] button.

Set shutdown parameters

- 5) Confirm the name of the computer to install Slave Agent in.
- 6) Select [Shutdown] or [Hibernate] as desired.
- 7) Click the [Submit] button.

Finish the setup

- 8) Click the [Close] button.

Other settings can be set as needed.

PowerAct Pro (Slave Agent) Configuration Setting

Select Master Agent

Master Agent: ① SC20G2

Redundant Power Supply Setting: Disable

Redundant Power Supply Mode: 1 + 1

The Total of Power Supply Units in the Computer:

The Total of Power Supply Units in necessary:

IP addresses of Master Agent:

No.	IP Address
1 ③	192.168.2.237

② Search

④ Submit

Popup Message: Disable

Shutdown Parameter Setting

Select UPS Outlet:

No.	Outlet
1	Outlet A(No Control)

⑦ Submit

Computer Name: ⑤ OMRON

Shutdown Delay Time (Sec): 0

Run External Command Time (Sec): 0

Run External Command: Browse

Select Shutdown Mode: ⑥ Shutdown

Select Virtual Server Shutdown Mode: Shutdown by System

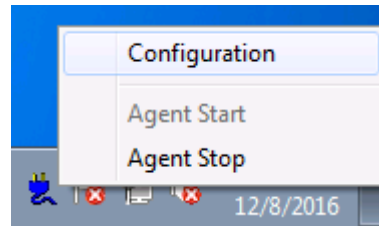
Select Guest OS Shutdown Mode: Shutdown

⑧ Close

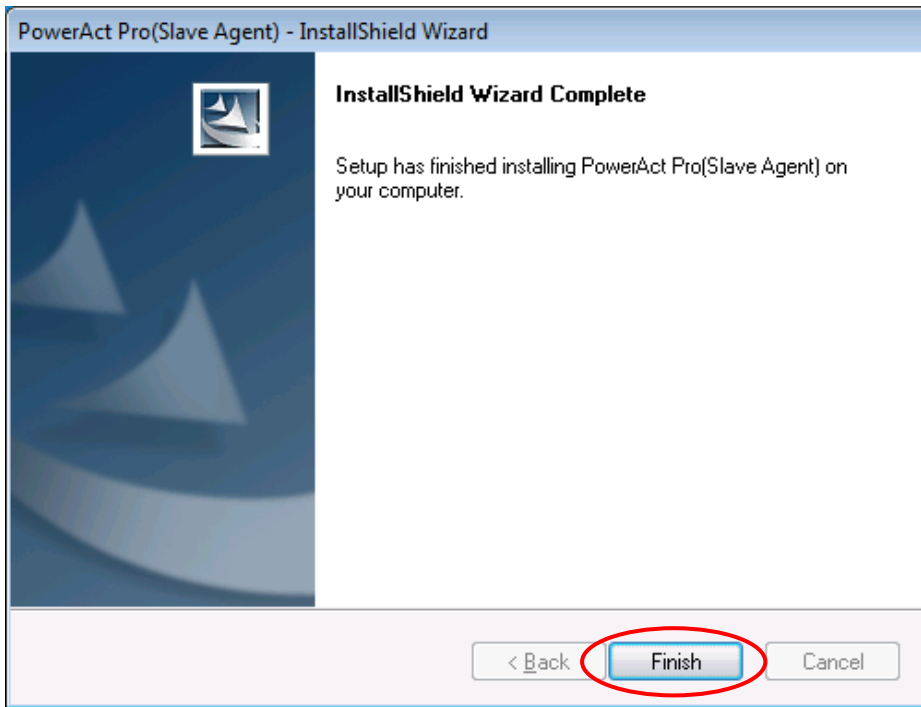
Back Event Log

Hint

You can also setup from [Configuration] displayed by right-clicking the resident icon of the PowerAct Pro displayed on the task tray after installation.



14 Click the [Finish] button to return to the Desktop window.



Hint

Close the OMRON UPS automatic shutdown software menu window if it is open.

15 Remove the CD-ROM from the drive.

Now, Slave Agent has been completely installed.

Please continue to the next step, "4 Changing firewall configuration" on the page 22.

4 Changing firewall configuration

If you shut down more than one computer at a time using PowerAct Pro (linked shutdown), you should change the configuration of [Windows Firewall].

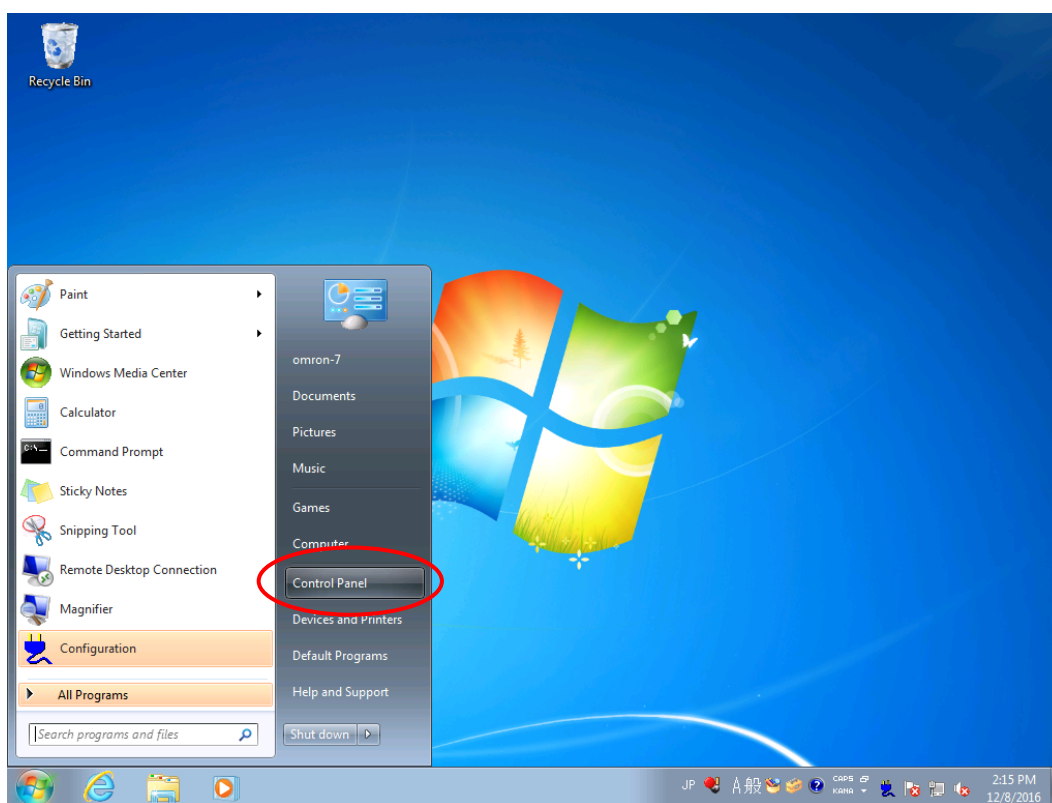
CAUTION

This operation should be set for both the computer having which PowerAct Pro Master Agent installed and the computer having PowerAct Pro Slave Agent installed.

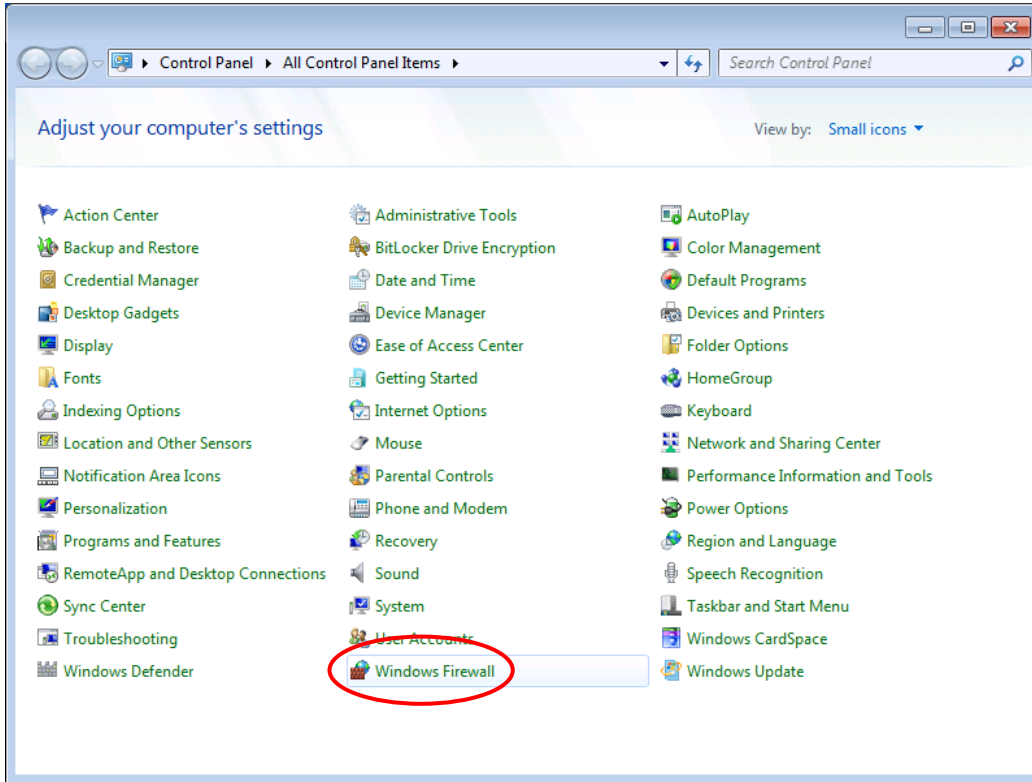
CAUTION

If you shut them down using SC20G/SC20G2 as the Master Agent, you don't have to set the following settings.

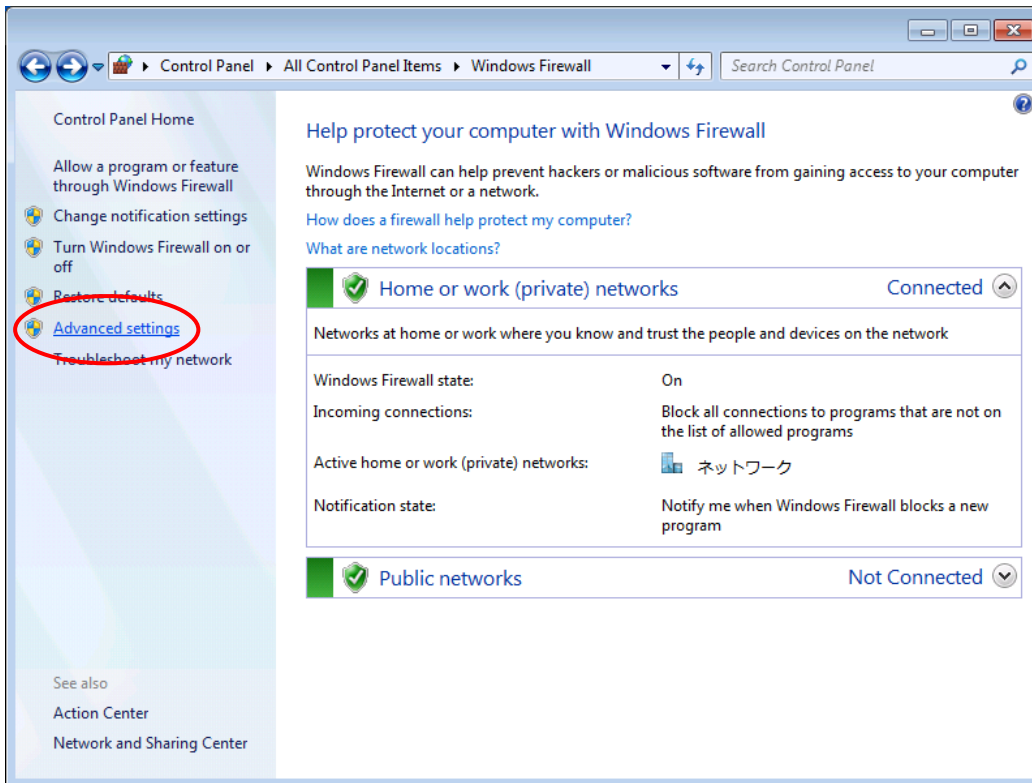
- 1 Click the [Start] button > [Control Panel].



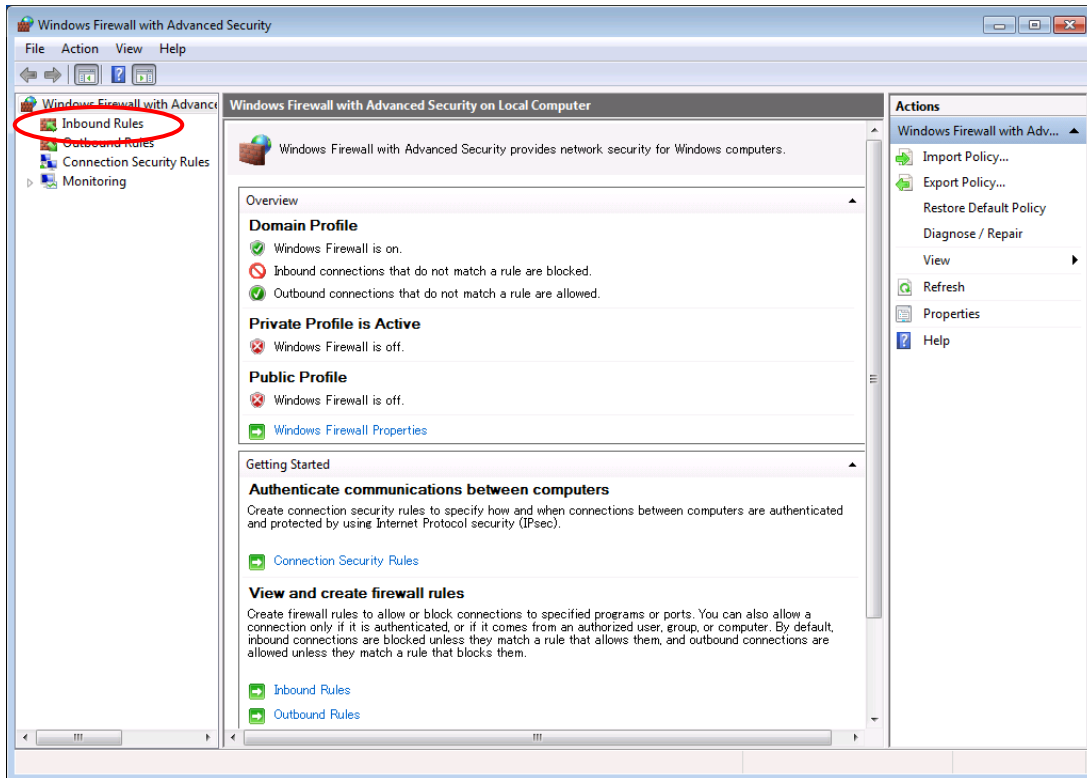
2 Select [Windows Firewall].



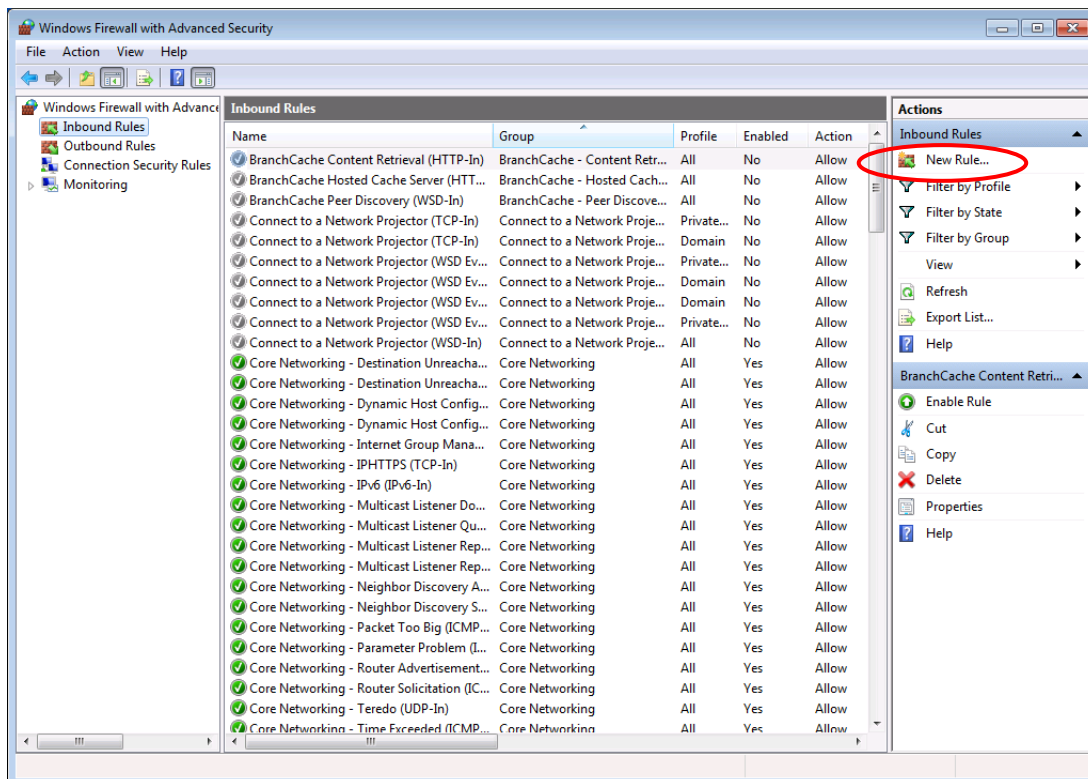
3 Select [Advanced Settings].



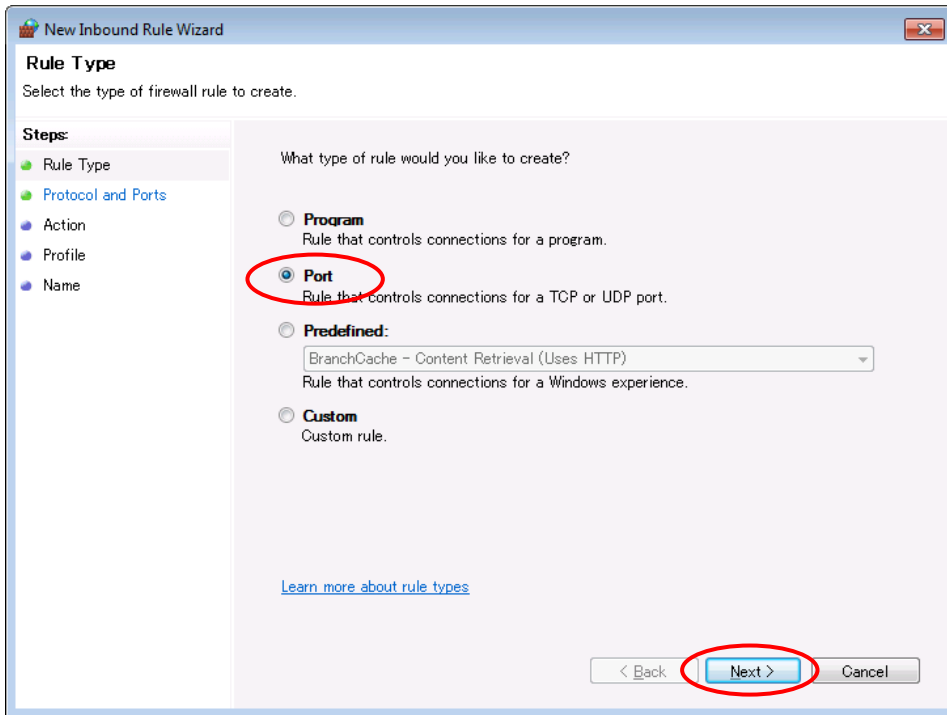
4 Select [Inbound Rules].



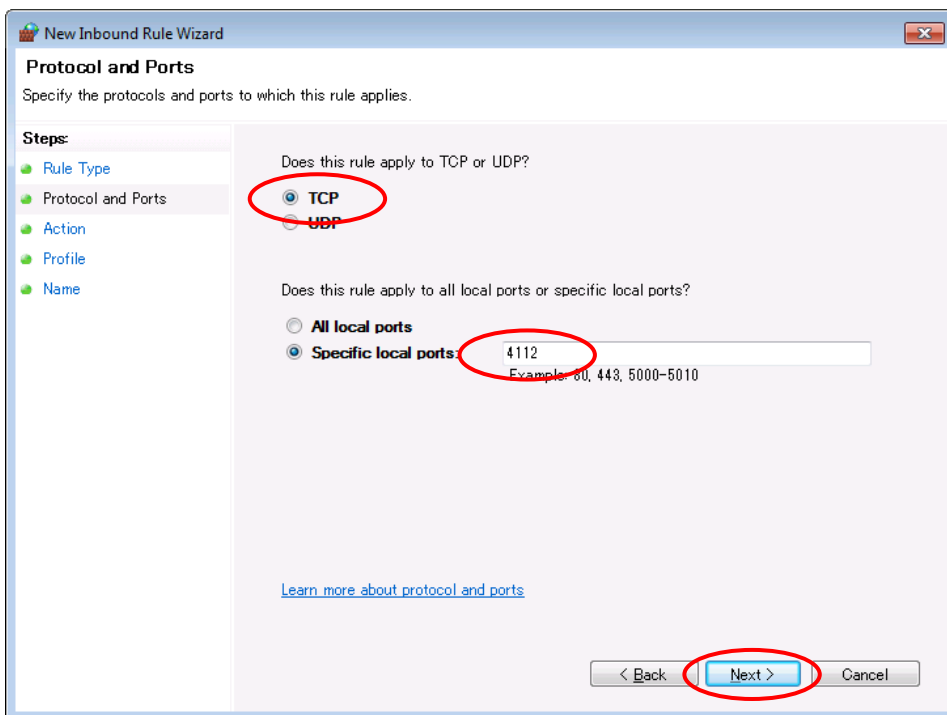
5 Select [New Rule].



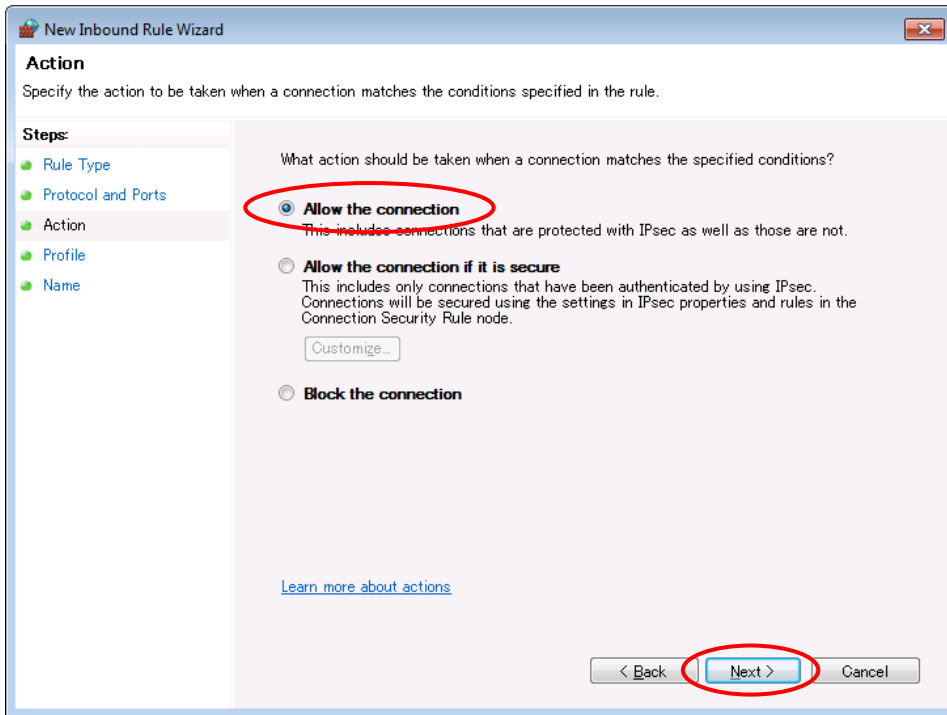
6 Select [Port] and click the [Next >] button.



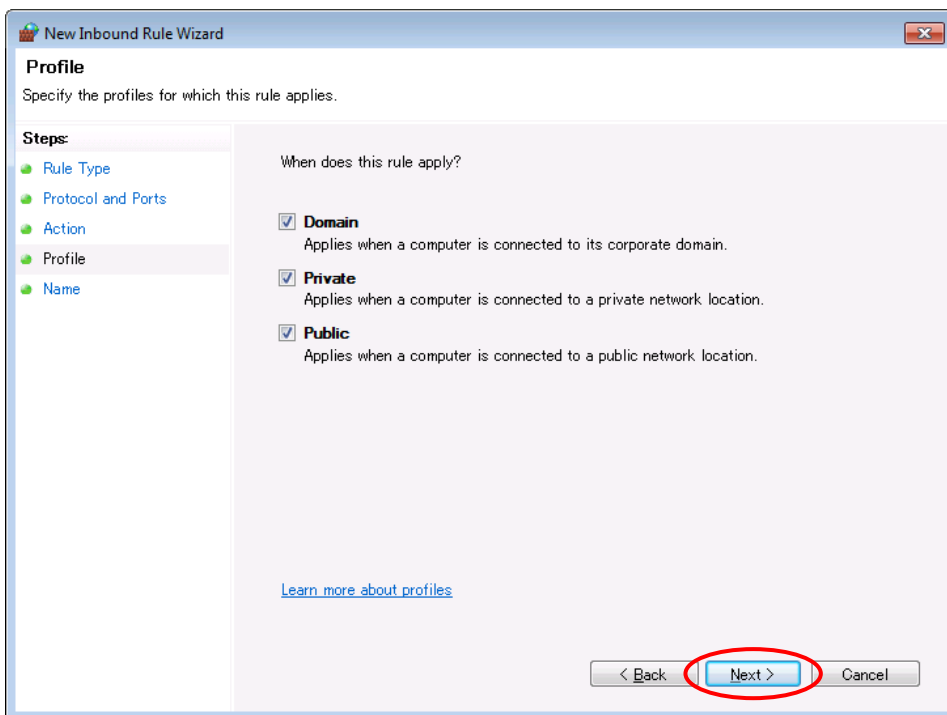
7 Select [TCP], type "4112" in [Specific local ports] and click the [Next >] button.



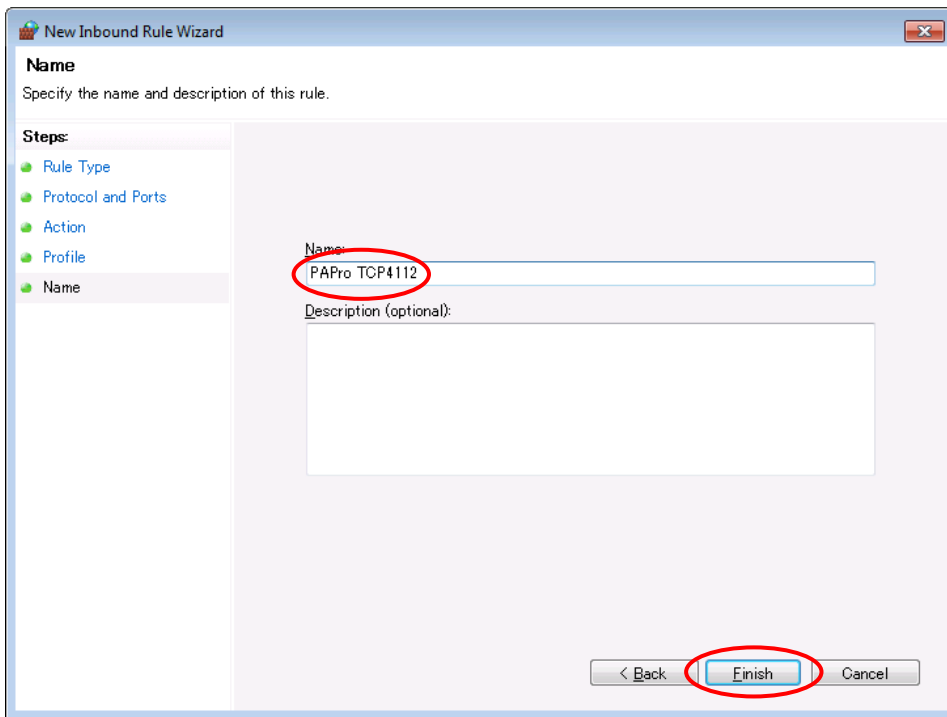
8 Select [Allow the connection] and click the [Next >] button.



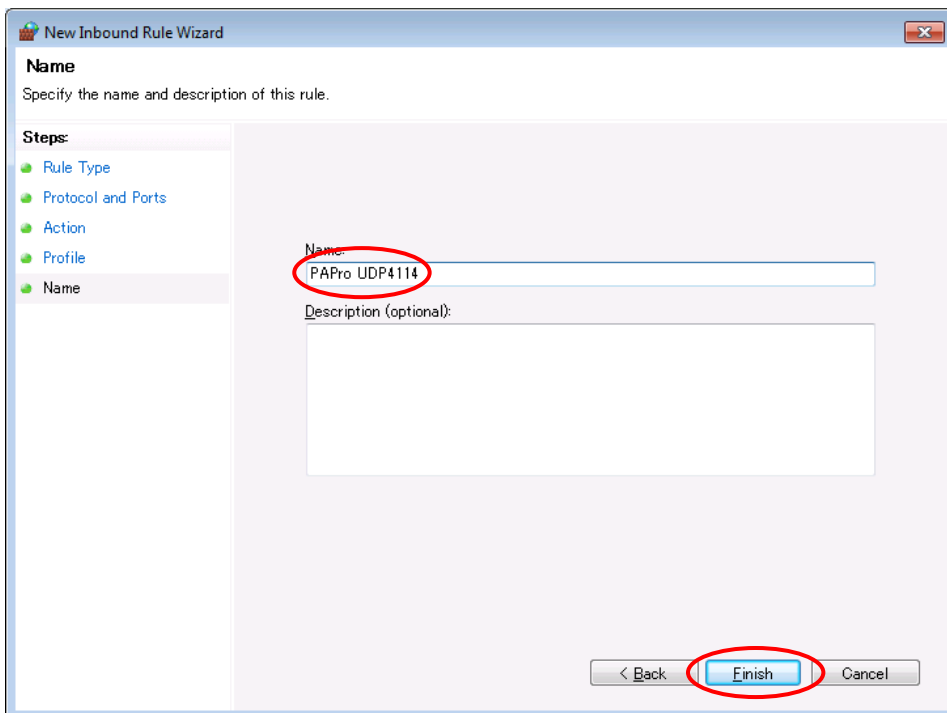
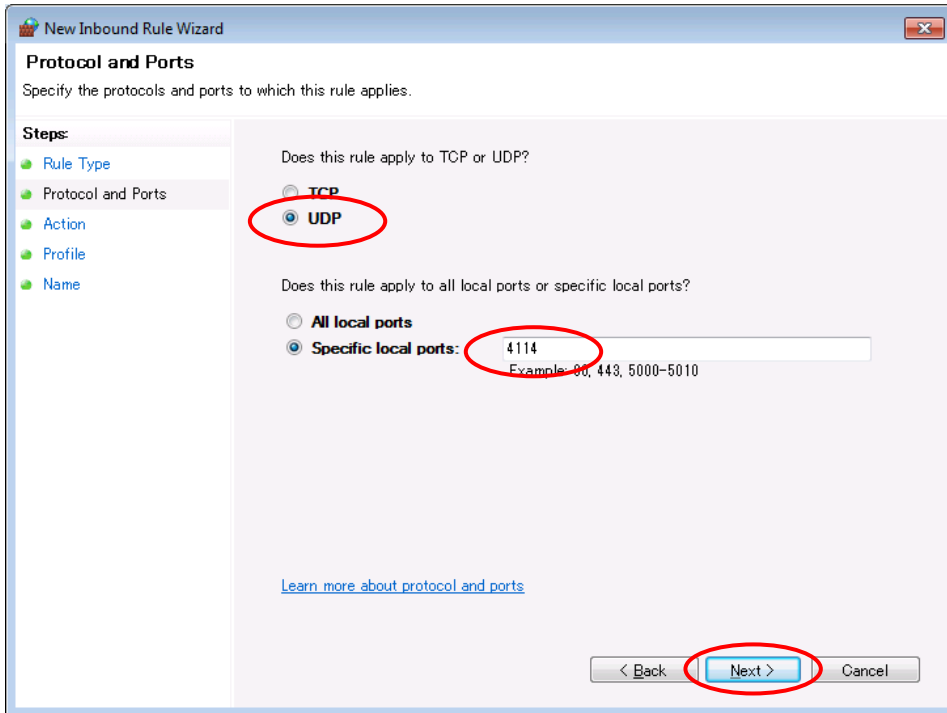
9 Check an appropriate connection environment and click the [Next >] button.



10 Type any name (e.g. PAPro TCP4112) in the Name column and click [Finish].

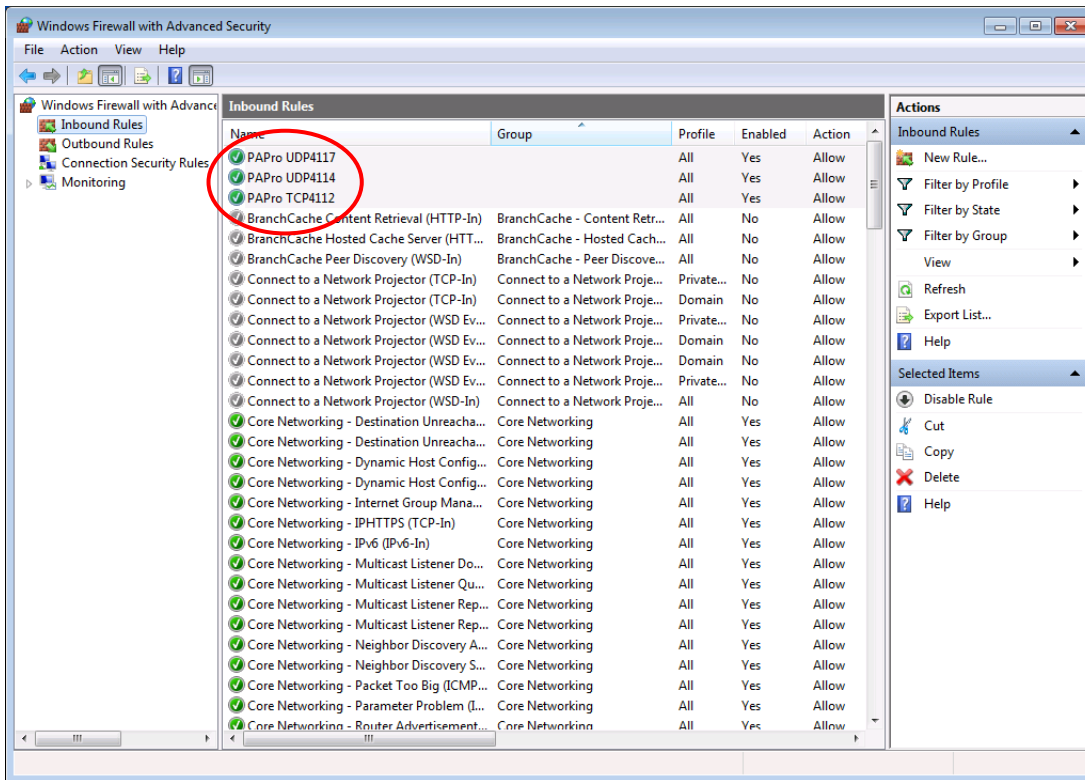


- 11 Likewise, start with the step 5 again, select [UDP], type "4114" in [Specific local ports] and register any name (e.g. PAPro UDP4114).

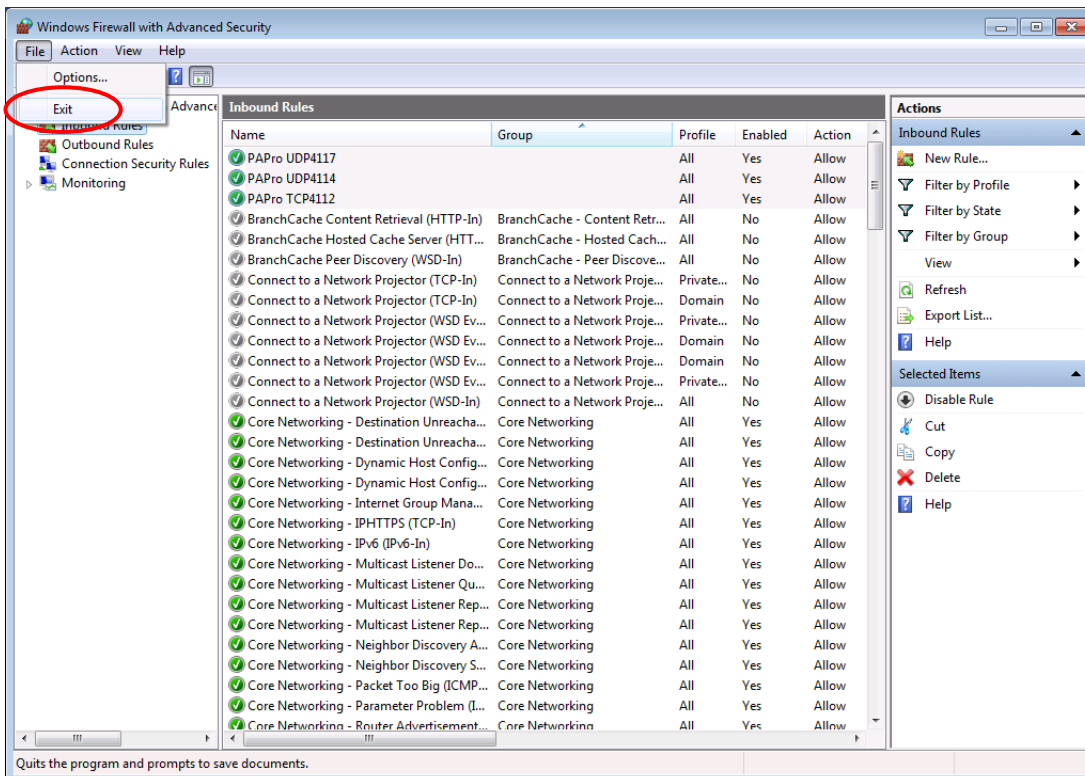


- 12 Likewise, select [UDP], type "4117" in [Specific local ports] and register any name (e.g. PAPro UDP4117).

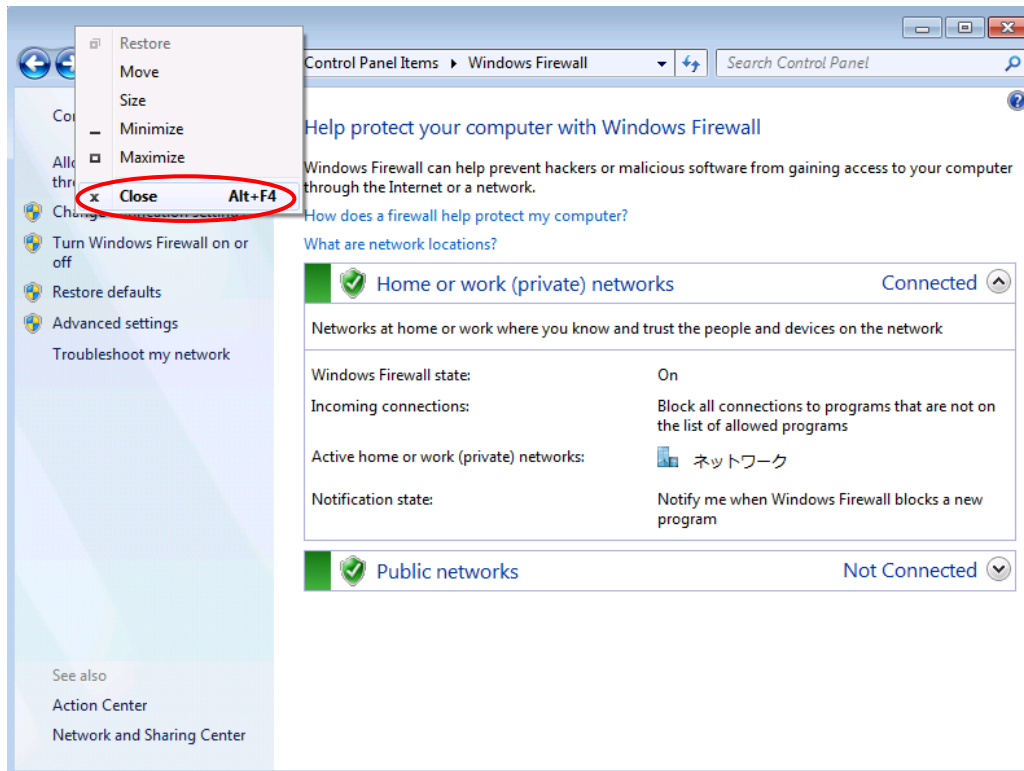
13 Check that these name (e.g. PAPro TCP4112, PAPro UDP4114 and PAPro UDP4117) are displayed on the [Inbound Rules] column.



14 Close the firewall setup screen by selecting [File] > [Exit].



15 Right-click the title bar, select [Close] to finish the firewall setup.



Now, PowerAct Pro Slave Agent has been completely installed.